

education / community programme

The Education and Community Programme aims to create access to the visual arts by developing new audiences, which are both engaged and informed, through a broad range of programmes and projects, and to develop good practice in the field of arts education through action research projects.

Mediator Talks

Free guided tours every week on Wednesday, Friday and Sunday at 2:30pm. No booking is required and tours depart from the main reception area.

Guided Visits

Group leaders, teachers and tutors can book free guided visits of IMMA's exhibitions for their classes and groups. Booked tours are available Tuesday - Friday 10.00am, 11.45am, 2.30pm and 4.00pm. Tours are 45 minutes in duration. There are restrictions to group size (32 maximum). Two adults should accompany each primary class. To book please contact the information desk at least three weeks in advance of your intended visit tel: 01 612 9967, email: frontofhouse@imma.ie

Explorer for Families

IMMA's family programme, *Explorer*, invites children and adults to visit selected artworks in the company of two of IMMA's gallery staff, the Mediators. Families then use art materials to respond to their experience in the galleries. *Explorer* is available, free of charge, from 2.00pm to 4.00pm each Sunday from 6 October to 8 December. Each project is limited to 35 participants. The project theme is repeated every second Sunday. Arriving early is advised.

IMMA Primary School Programme

While primary teachers can book a 45 minute guided visit for their classes throughout the year as outlined above, teachers can also book into the annual IMMA *Primary School Programme*. Each participating class visits a set of artworks at IMMA and experiences some art-making processes related to the exhibition theme. Teachers are supported through exhibition notes, starting points for classroom projects and an introductory talk at IMMA prior to the class visit. The *Primary School Programme* caters for different age groups at specific times in the school year. Places are subject to demand and early booking is advised. The fee per class is €25.00.

For further information on *Explorer* or the *Primary School Programme* contact Mark Maguire, Assistant Curator; Children's Programmes: Education and Community Department, IMMA, tel: 01 6129914, email: mark.maguire@imma.ie

Studio 10

Based in IMMA's *Studio 10* on Friday mornings, older adults are invited to drop in and participate in art workshops, as well as visiting exhibitions and resident artists at IMMA. This programme runs on Fridays, from 14 September to 14 December, 10.00am - 1.00pm. It's free and basic materials are provided.

Focus On...

Focus On... is a programme designed to introduce IMMA to groups from training or support organisations or groups outside the formal education system. Participating groups become familiar with IMMA's exhibitions in the company of a Mediator and an artist, as well as participating in art workshops and meeting resident artists. Each group project runs for a maximum of six sessions over six months.

For further information on *Studio 10* or *Focus On...* contact Lisa Moran, Curator: Education and Community Department, IMMA, tel: 01 6129912, email: lisa.moran@imma.ie

Talks and Lectures

The Irish Museum of Modern Art's regular series of talks and lectures gives the general public and targeted audiences a unique opportunity to meet and interact with a cross section of artists, curators and specialists. The Museum aims to present a broad range of talks and lectures reflecting and debating the Museum's diverse programme of temporary exhibitions, the Collection and aspects of the Education and Community Programme. A detailed brochure outlining the current programme is available from the main information desk.

For further information on the Talks and Lectures Programme, please contact Aoife Ruane, Assistant Curator: Education and Community Department, IMMA, tel: 01- 6129913, email: aoife.ruane@imma.ie

artists' residency programme

The Artists' Residency Programme is an international studio/residency programme located in the studio blocks at IMMA. The Programme provides opportunities for artists to research and develop their practice. It supports both emerging and established artists, working in any medium by application or invitation and is open to Irish and international artists. There are two application deadlines yearly, 31 March and 30 September. Visitors are invited to meet participating artists in their studios as the artists' schedules permit. Studio visits should be requested at least two weeks in advance of your preferred date. Talks, panel discussions, open days and workshops, which are free and open to the public, are arranged in association with the artists' residencies. Work in progress from participating artists can be seen in the Process Room, First Floor Galleries.

Studio 3B	Phuttiiphong Aroonpheng (Thailand)	September – December
Studio 6A	Martin Healy (Ireland)	Until September
	Marianna Siva da Silva (Brazil)	December – February
Studio 11	Mark Clare (Ireland)	September - December
Studio 12	Clive Murphy (Ireland)	Until September
	Alan Phelan (Ireland)	November – February
Studio 13	Giles Round (UK)	Until September
	Yuki Okumura (Japan)	October – January
Studio 14	Ciaran Murphy (Ireland)	Until September
	Seamus Nolan (Ireland)	October – March

Information on participating artists, application forms and updated schedules on the Process Room and other Artists' Residency Programme events are available from Janice Hough, Artists' Residency Programme Co-ordinator, tel: 01 612 9905, email: janice.hough@imma.ie or download from the Museum's website at www.imma.ie.

national programme

The National Programme is designed to make the Museum's assets, skills and resources available in a variety of situations and locations in Ireland. Using the IMMA Collection, the National Programme facilitates the creation of exhibitions and other projects for display in a range of locations around the country. The National Programme establishes the Museum as inclusive, accessible and national.

1 - 30 Sept | Collectors' Choice: An Exhibition of Works Selected by Maura and George McClelland from their Personal Collection and the McClelland Collection at IMMA

The Strule Arts Centre, Omagh, Co Tyrone

This exhibition includes works by William Conor, Gerard Dillon, Paul Henry, Tony O'Malley, Dan O'Neill, Colin Middleton and William Scott amongst others.

4 Oct – 2 Dec | Collectors' Choice: An Exhibition of Works Selected by Maura and George McClelland from their Personal Collection and the McClelland Collection at IMMA

The Highlanes Gallery, St Laurence Street, Drogheda, Co Louth

This exhibition travelled to Dingle in May of this year as part of the Féile na Bealtaine Festival and to the Strule Arts Centre, Omagh in September.

15 - 21 Oct | Selected Works from the IMMA Collection

NUIG and the Town Hall Theatre, Galway

This exhibition is shown in partnership with Baboró, Galway International Arts Festival for Children.

It includes works by Marie Jo LaFontaine at NUIG, and works by Caroline McCarthy, Paddy Jolley, Rebecca Trost and Inger Lise Hansen at the Town Hall Theatre.

10 Nov - 14 Dec | Selected Works from the IMMA Collection

Roscommon Arts Centre, Circular Road, Co Roscommon

The development and promotion of this exhibition will be supported by students from a local secondary school.

29 Nov - Jan | Selected Works from the IMMA Collection

Cavan County Museum, Ballyjamesduff, Co Cavan

For further information on any aspect of the National Programme, please contact Georgie Thompson, National Programmer, IMMA, tel: 01 612 9909, email: nat.programme@imma.ie

IMMA Members

Join our new Membership scheme today and enjoy IMMA more. Your support will help us to develop our activities and share our Collection and programmes with thousands of visitors from around the world. There are several membership categories with many benefits and privileges available to you in thanks for your generosity.

For further information please pick up an IMMA Members brochure at the museum, visit our website www.imma.ie or contact the Development Office, IMMA, tel: 01 612 9902, email: members@imma.ie

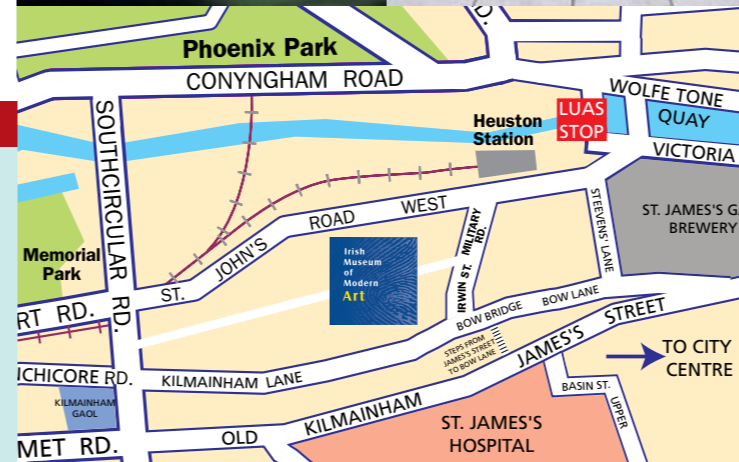
IMMA Editions

IMMA is pleased to offer a number of limited editions for sale. These editions are the result of the generosity of several artists towards the Museum. Limited editions by the following artists are now available: Francesco Clemente, Juan Uslé, Dorothy Cross, Franz Ackermann, Isaac Julien, João Penalva, Barry Flanagan and Anne Madden. IMMA Members receive a 10% discount on IMMA editions. For further information visit www.imma.ie or contact the Development Office, IMMA, tel: 01 612 9902, email: editions@imma.ie

The Irish Museum of Modern Art is Ireland's leading national institution for the collection and presentation of modern and contemporary art.

The Museum's mission is to foster within society an awareness, understanding and involvement in the visual arts through policies and programmes which are excellent, innovative and inclusive. The Museum presents a wide variety of art in a dynamic programme of exhibitions, which regularly includes bodies of work from its own Collection and its award-winning Education and Community Department. It also creates more widespread access to art and artists through its Studio and National programmes.

The Museum is housed in the magnificent 17th-century Royal Hospital building, whose grounds include a formal garden, meadow and medieval burial grounds.



How to get there

Museum Entrance on Military Road.

By Bus: Buses to Heuston Station (5 minutes walk via Military Rd): 26 from Wellington Quay; 51, 79 from Aston Quay; 90 Dart Feeder Bus from Connolly and Tara Street Stations to Heuston Station. Buses to James St (5 minutes walk via steps to Bow Lane onto Irwin St and Military Rd): 123 from O'Connell St/Dame St; 51B, 78A from Aston Quay.

By car: 10 minute drive from city centre. Unlimited free car parking.

On foot: Approx. 30 to 40 minutes from city centre.

By train: 5 minute walk from Heuston Station; from Connolly and Tara Street Stations by 90 bus to Heuston Station.

By Luas: Red Line to Heuston Station.

Opening Hours

Tuesday - Saturday	10.00am - 5.30pm
except Wednesday	10.30am - 5.30pm
Sunday & Bank Holidays	12 noon - 5.30pm
Monday	Closed
Last admission	5.15pm
Christmas Opening Hours	
24 - 27 & 31 Dec	Closed
28 - 30 Dec & 1 Jan	12 noon - 5.30pm

Children under 12 must be accompanied by an adult.

Visitors are asked not to touch or photograph the artworks.

Formal Gardens and Bookshop open Museum hours.



Grass Roots Café Open

Monday - Saturday	10.00am - 5.00pm
Sunday & Bank Holidays	12 noon - 5.00pm

Guided Tours of Exhibitions

Wednesday, Friday & Sunday 2.30pm.

It is also possible to pre-book a guided tour. These free tours are available Tuesday - Friday at 10.00am, 11.45am, 2.30pm and 4.00pm. To book please telephone: 01 612 9967 or email: frontofhouse@imma.ie at least three weeks in advance of your intended visit.

Guided Heritage Tours

OPW Built Heritage Services offer guided heritage tours of the Royal Hospital Kilmainham during the Summer Season. A permanent heritage exhibition and video are on view all year round.

Visitor Facilities

With the exception of the Ground Floor East Wing Gallery, where access is limited, the Museum is wheelchair accessible. For information on set down facilities for disabled visitors please contact the information desk tel: 01 612 9967. Wheelchair available on request.

There are also adapted toilets, baby changing facilities and a locker room. A lunchroom is available for children's groups. Booking is required at least two weeks in advance, please contact the information desk for more details.

Dublin Culture Night 2007

Friday 14 September - IMMA Open until 10.00pm

IMMA is one of the participants in Dublin Culture Night 2007 - a free cultural night out in the city. For further details visit: www.culturenight.ie

For further information please contact:

Irish Museum of Modern Art/Áras Nua-Ealaíne na hÉireann
Royal Hospital, Military Road, Kilmainham, Dublin 8
Telephone +353-1-612 9900 Fax +353-1-612 9999 Email info@imma.ie

www.imma.ie

Irish Museum of Modern Art

Thomas Scheibitz, *Spiel der Verlierer (detail)*, 2007, 305 x 188 cm. Oil on canvas. Courtesy: Tanya Bonakdar Gallery



events
SEPTEMBER > DECEMBER 2007



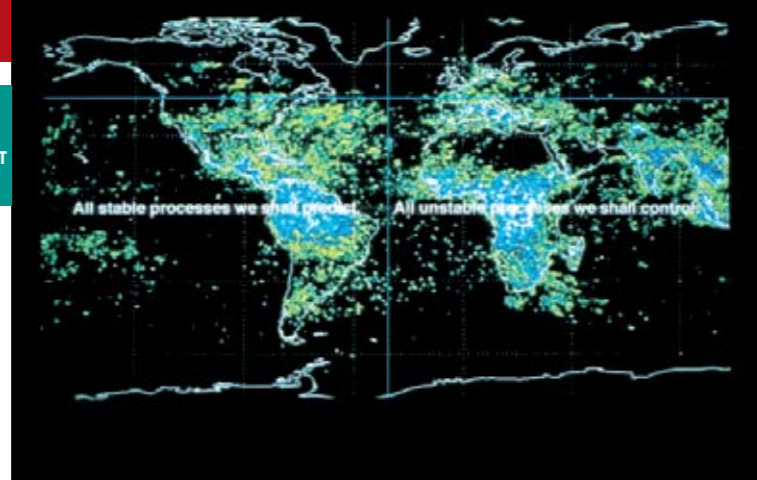
EAST WING, FIRST FLOOR GALLERIES

Anne Madden: A Retrospective

Spanning the entire career of one of Ireland's most highly-regarded painters, this exhibition comprises some 60 works from the 1950s to date, including a number direct from the artist's studio. The exhibition features some of Madden's most important paintings, including early works inspired by the Burren and her series of *Megaliths*, *Monoliths* and *Doorways*, from the 1970s. The exhibition also presents early sculptural works, paintings from her *Elegy*, *Pompeii*, *Odyssey*, *Icarus*, *Garden of Love* and *Garden series* and new paintings from her *Aurora Borealis* series.

A fully-illustrated catalogue, published in association with Scala, accompanies the exhibition. Price €39.00

UNTIL
30 SEPT



Ryoji Ikeda, *C4I*, 2004, Photo: Kazuo Fukunaga, Produced by Forma

GREAT HALL

Ryoji Ikeda

Japan's leading electronic composer/artist, Ryoji Ikeda, focuses on the minutiae of ultrasonics, frequencies and the essential characteristics of sound itself. Since 1995, Ikeda has been active through concerts, installations, and recordings, integrating sound, acoustics and sublime imagery. In the artist's works, music, time and space are shaped by mathematical methods as Ikeda explores sound as sensation, pulling apart its physical properties to reveal its relationship with human perception.

This performance at IMMA includes two of his most influential and acclaimed performances *C4I* and *datamatics (ver.1.0.)*.

It is presented by IMMA, in association with Forma, Note Productions, and the Ulster Bank Dublin Theatre Festival.

***Ticketing information**

Tickets €17.00 (including booking fee).

Available from TicketMaster tel: 0818 719300 or visit www.ticketmaster.ie and Dublin Theatre Festival Box Office tel: 01 677 8899 or visit www.dublintheatrefestival.com

EAST WING, GROUND FLOOR GALLERIES

Patrick Hall

Presenting some 90 drawings, this exhibition focuses on ink, pastel and watercolour works on paper and nude charcoal drawings by one of Ireland's most important painters. It includes a selection of recent drawings, some of which have not previously been exhibited, and new works from the artist's studio. Hall's work is fundamental to an understanding of the so-called return to painting in the late 1970s and early '80s in Ireland.

A fully-illustrated catalogue accompanies the exhibition.

EAST WING, FIRST FLOOR GALLERIES

Mirosław Balka: Tristes Tropiques

Tristes Tropiques (The Endless Journey) is an exhibition of 26 sculptures and installation works by the leading Polish artist Mirosław Balka. Surveying the last two decades, it includes eight large-scale installations and two new works never

Patrick Hall, *The Protecting Wings*, 2007, ink and watercolour, 14.5 x 16.5 cm, Collection of the artist



10 OCT
- 6 JAN

14 NOV
- 27 JAN

5 OCT
8PM

WEST WING, FIRST FLOOR GALLERIES

(I'm Always Touched) By Your Presence, Dear

New Acquisitions

This exhibition features 37 pieces acquired by IMMA since 2003 through purchase, donation and long-term loan. The exhibition concentrates mainly, but not exclusively, on new media. It includes film-works by Pierre Huyghe, Lu Chunsheng and Brian Duggan, an installation by Dorothy Cross, a painting by Hughie O'Donoghue and a photo work by Candida Höfer. The exhibition takes its title from a 1978 song by the American punk rock band Blondie.

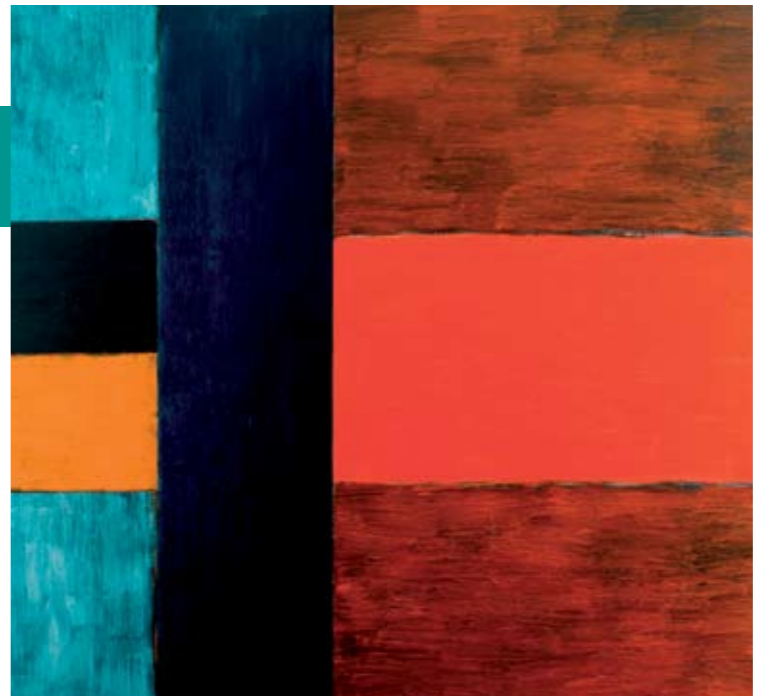
WEST WING, GROUND FLOOR GALLERIES

Three

Three is the first in a series of exhibitions which juxtaposes the work of three artists from the Collection through a concentrated display of

Sean Scully, *Once*, 1986, oil on canvas, 245 x 283 cm, Collection Irish Museum of Modern Art

28 NOV
- 2 MAR



shown before. Balka's work has a bare and elegiac quality that is underlined by a careful, minimalist placement of objects, as well as the gaps and pauses between them. He deals with both personal and collective memories, especially as they relate to his Catholic upbringing and the experience of Poland's fractured history.

A major publication accompanies the exhibition.

EAST WING, FIRST FLOOR GALLERIES

Thomas Scheibitz: about 90 Elements/TOD IM DSCHUNGEL

This first solo exhibition in Ireland by the German artist Thomas Scheibitz comprises a selection of new paintings and sculptures and some earlier works. His paintings have a distinctly post-Cubist orientation, while his puzzle-like forms are carefully composed in tightly connected compositions locked into shallow spaces. His paintings are filled with consumerist references derived from images collected from the media, which are broken down until abstraction takes over from representation.

A fully-illustrated catalogue accompanies the exhibition.

NEW GALLERIES

James McKenna

This exhibition comprises sculptures and drawings by Irish artist James McKenna, a prominent figure in the visual arts and literary circles from the 1960s until his death in 2000. Born in Dublin in 1933, McKenna studied at the National College of Art. A founding member of both the Independent Artists Group and the Sculptors' Society of Ireland, he was awarded the Macaulay Fellowship for Sculpture in 1960 and became a member of Aosdána in 1983.

A fully-illustrated catalogue accompanies the exhibition.

UNTIL
17 MAR



Maria Simonds-Gooding, *Habitation & Extended Enclosure*, 1999, plaster on board, 119 x 165 cm, Collection Irish Museum of Modern Art

works drawn from the Collection and beyond to encourage direct engagement with individual artist's work. Maria Simonds-Gooding's works in the Collection range from an early 1970s plaster on board piece, to her latest investigations with polished steel, while Callum Innes is represented by a work from the *Exposed Paintings* series, a grouping of works that create texture by removing paint with turpentine. IMMA's holdings of Charles Brady's minimal, yet painterly, studies of ordinary objects, are contextualised by a generous loan from the Collection of the National Gallery of Ireland.

IMMA Collection Exhibitions Abroad

A major exhibition of 40 works from IMMA's Collection will take place in Sala Kubo-Kutxa, San Sebastián, Spain, 26 October 2007 – 20 January 2008. Ninety William Hogarth prints, will be shown at the Centre d'Estudis I d'investigació del MuVIM, Valencia, Spain, 16 December 2007 - 26 April 2008. From September, an installation of 30 works from the IMMA's Collection will go on exhibition in the Irish Embassy in The Hague for five years.

Nalini Malani, *Mother India: Transactions in the Construction of Pain*, detail, 2005, 1400 x 700 cm (adjustable). Five channel video installation. 6 DVDs in sync. (5 images, 1 sound). Courtesy of the artist



installations based on repositioning traditional Indian art in a modern-day context.

A substantial catalogue, published by IMMA in association with Charta, Milan, accompanies the exhibition. Price €39.00

UNTIL
14 OCT